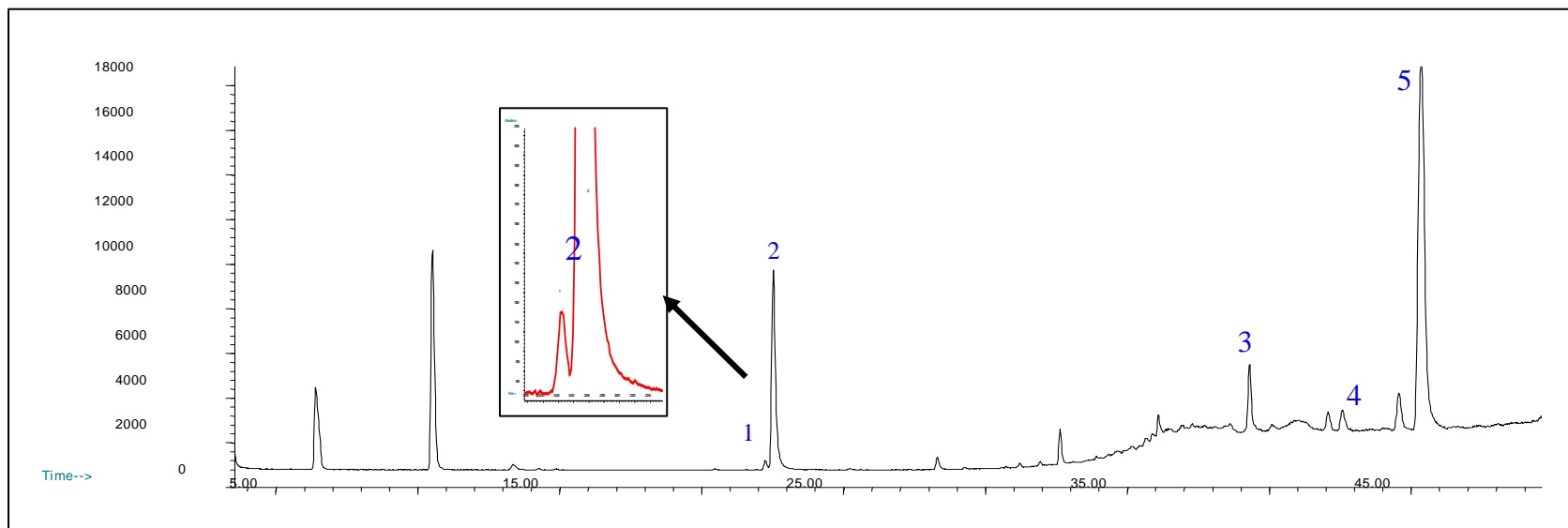
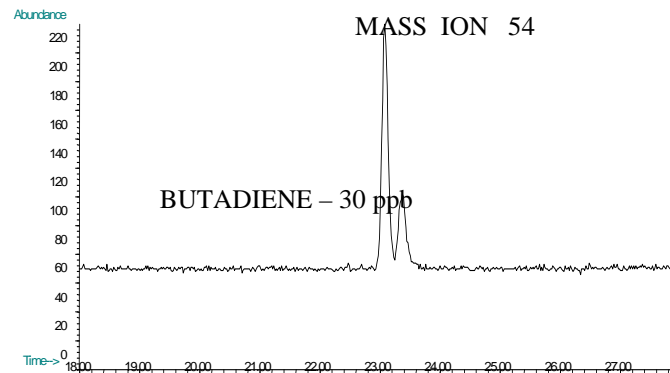


High Sensitivity Dual Needle Headspace for Polymers

REPEATABILITY FOR ISOPRENE AND BUTADIENE

N	Wt.g	Area ISOP	Wt.g	Area BD
1	0.5055	65	0.5023	7081
2	0.5023	70	0.5012	6666
3	0.5068	63	0.5008	6510
4	0.5029	67	0.4998	6493
5	0.501	70	0.5067	7230
Mean		67		6754
STD		2.7		320.7
RSD, %		4.1		4.7



GC/MS analysis of polymer: 1 – Butadiene (20 ppb), 2 - Butylenes (3 ppm), 3 - Vinylcyclohexene (50 ppb), 4 – Ethylbenzene (100 ppb), 5 - Styrene (7 ppm) .
 Column: CP-Silica Plot 30 m x 0.25 mm x 3 um. Sample: 0.5 g, equilibrated for 2 h at 105°C.