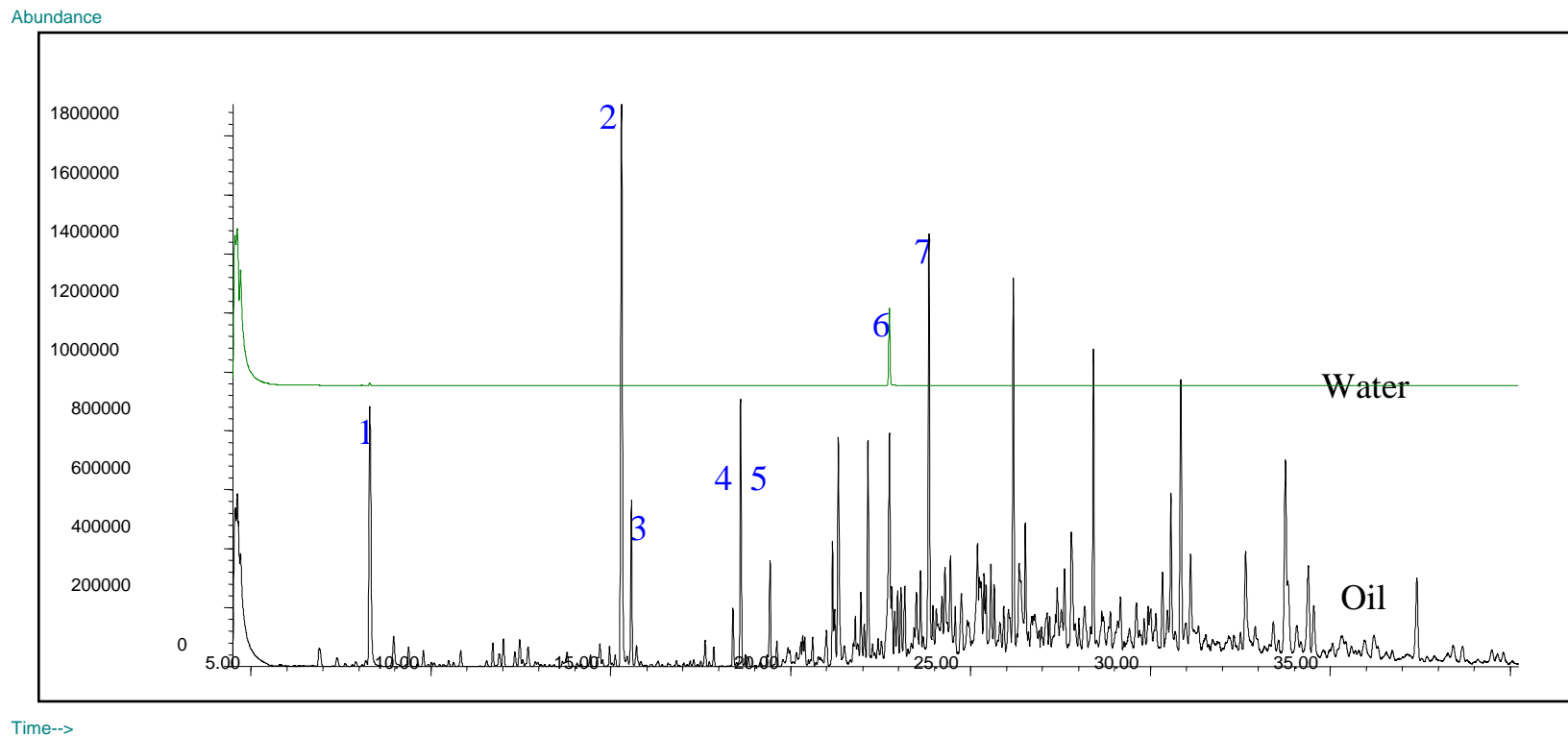


# Headspace GC/MS Analysis of Oil and Water Layer Samples



**GC/MS analysis: 1 - Thiapropane, 2 - Pyridine, 3 - Toluene, 4, 5- p- and o- Xylene, 6 - Aniline, 7 - Undecane.**  
**Column: SPB-624 60m x 0.25 mm x 1.4 um.**  
**Several ul of sample were equilibrated for 10 min at 145°C.**