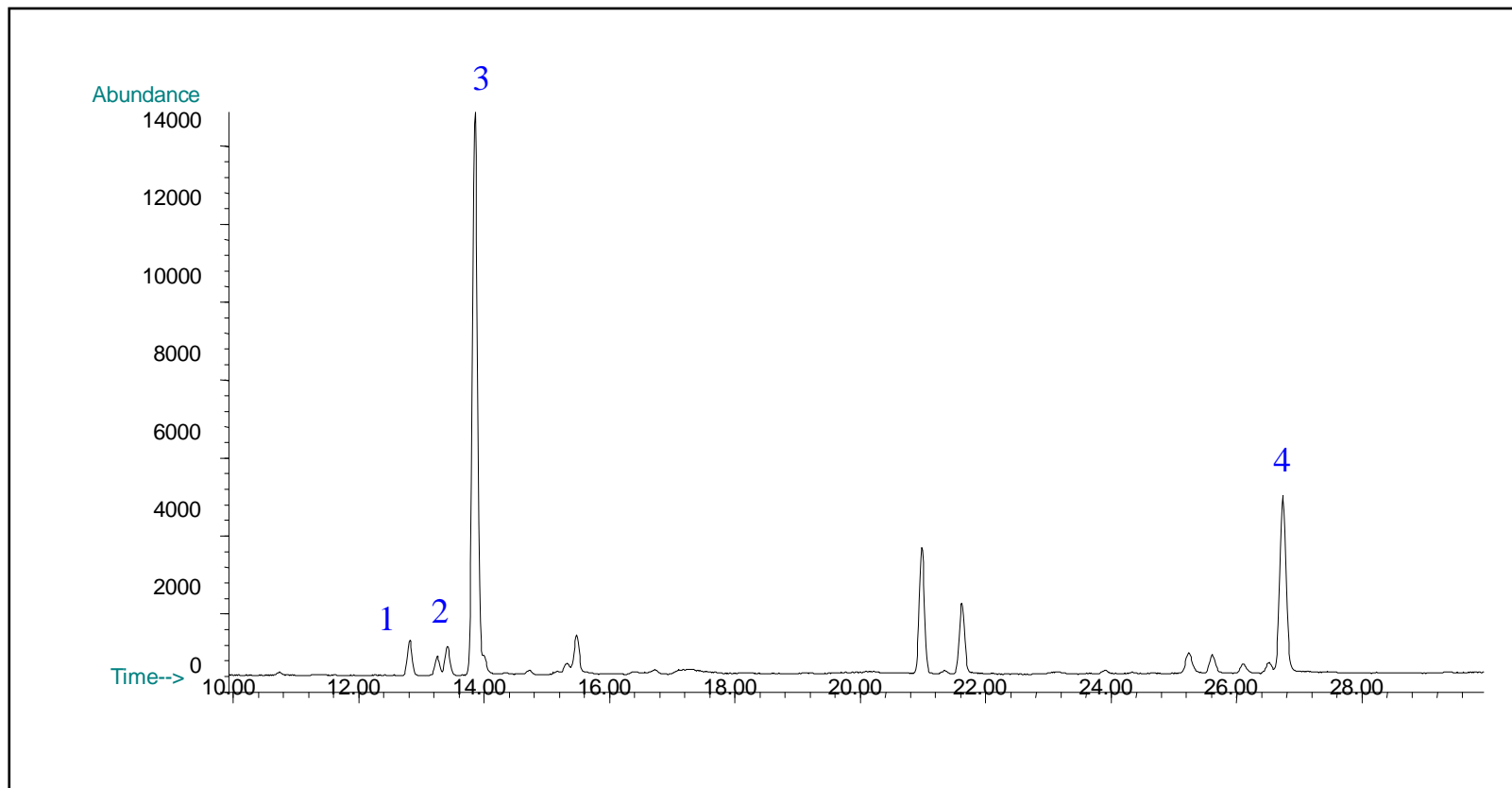


Headspace GC/MS Analysis of Latex



GC/MS analysis of latex : 1 – Vinylcyclohexene (4 ppm), 2 – Ethylbenzene (1 ppm), 3 – Styrene (50 ppm), 4 – **Phenylcyclohexene** (25 ppm). Column : Pona Analysis 100 m x 0.25 mm x 1 um. Sample: 25 mg (Latex 1: 9 Water) equilibrated for 30 min at 145°C.